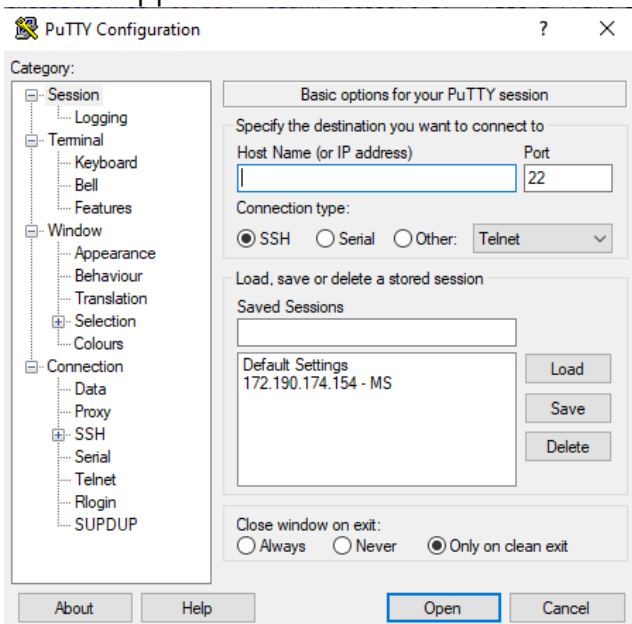
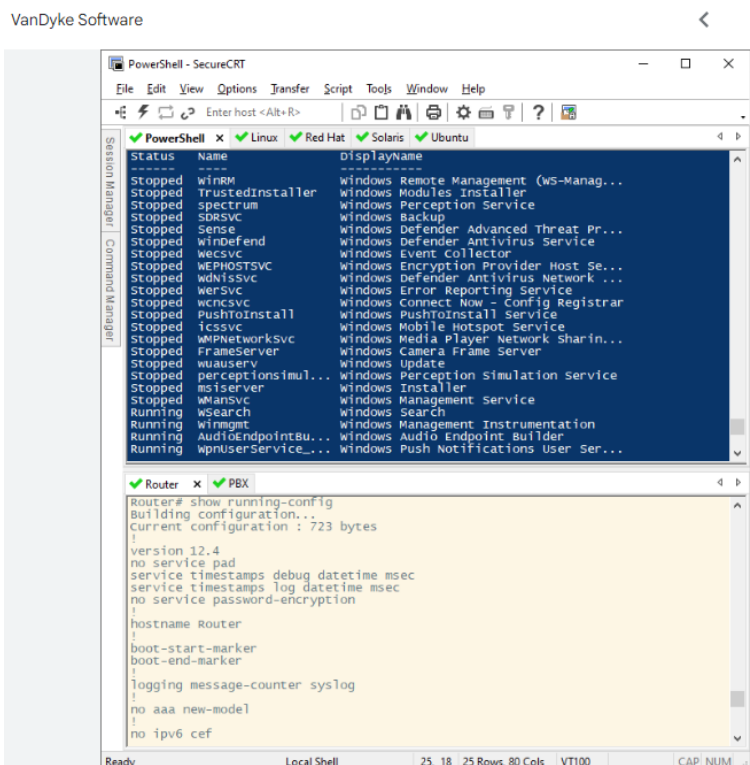


Popular terminal emulation software includes:

1. PuTTY: A free and open-source terminal emulator, serial console, and network file transfer application.



2. SecureCRT: A commercial terminal emulation software that supports SSH, Telnet, and various protocols for secure remote access.



3. Reflection (now part of Micro Focus Reflection): A comprehensive terminal emulation suite with support for various legacy systems and protocols.
4. iTerm2: A terminal emulator for macOS with advanced features such as split panes, hotkey support, and integration with shell scripts.
5. Tera Term: A free and open-source terminal emulator for Windows with support for SSH, Telnet, and serial communication.